

**Π Ι Ν Α Κ Α Σ Π Ρ Ο Ν Ο Ι Ω Ν Ζ Ω Ν Ω Ν**  
**" Δ Η Λ Ω Σ Η Π Ο Λ Ι Τ Ι Κ Η Σ "**

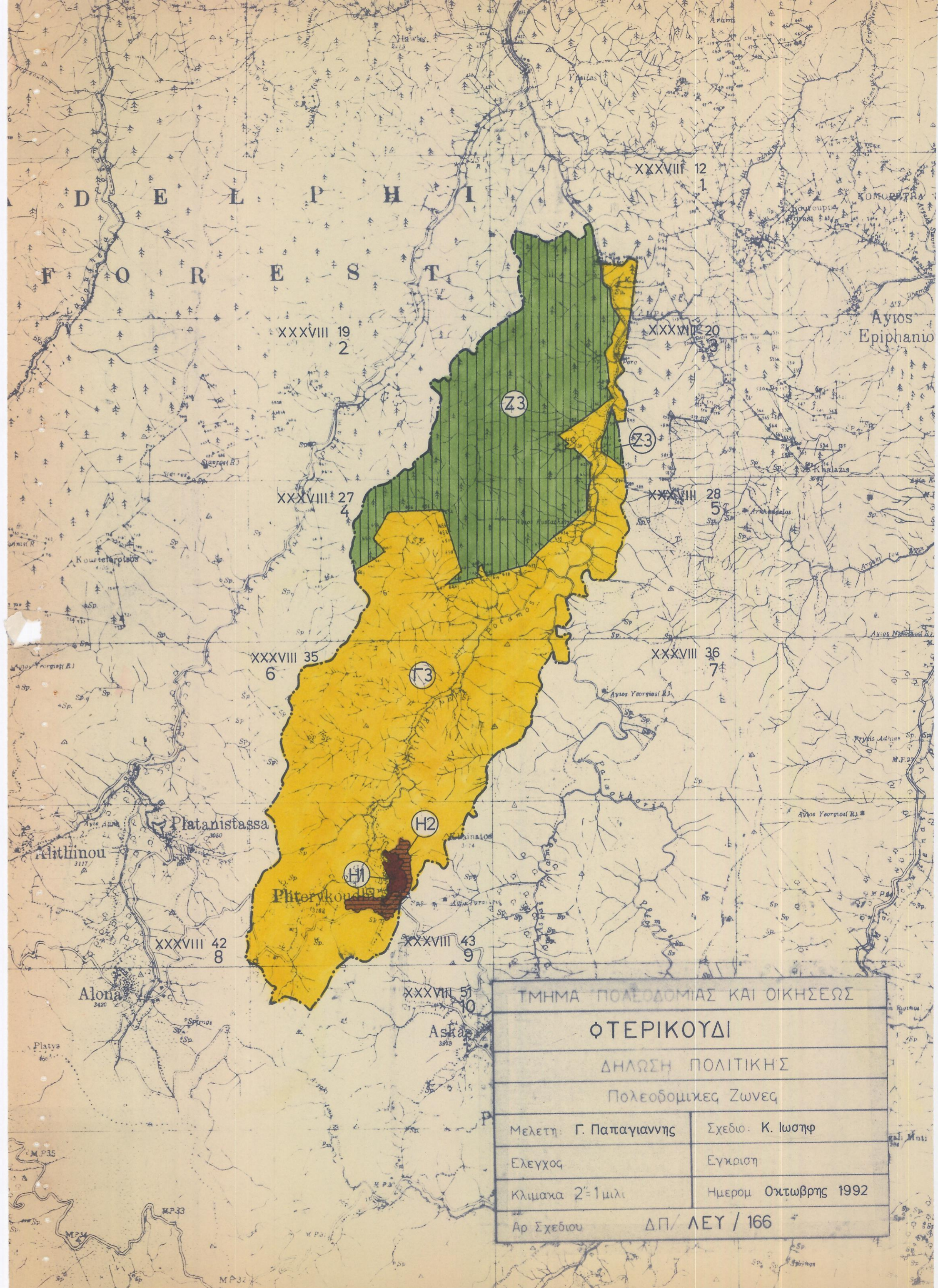
	Ζώνη	Ανώτατος Συντελ. Δομήσεως	Ανώτατο Ποσοστό Κάλυψης	Ανώτατος Αριθμός Ορόφων	Ανώτατο Ύψος σε μέτρα
	H1	1.20:1	0.70:1	2/3	8.30/11.40
	H2	0.90:1	0.50:1	2	8.30
	H3	0.60:1	0.35:1	2	8.30
	H4	0.40:1	0.25:1	2	8.30
	H5	0.30:1	0.20:1	2	8.30
	H6	0.20:1	0.20:1	2	8.30
	H7	0.15:1	0.15:1	2	8.30
	H8	0.10:1	0.10:1	2	8.30
	Π	0.10:1	0.10:1	2	8.30
	E1	0.90:1	0.50:1	2	-
	E2	0.90:1	0.50:1	2	-

	Ζώνη	Ανώτατος Συντελ. Δομήσεως	Ανώτατο Ποσοστό Κάλυψης	Ανώτατος Αριθμός Ορόφων	Ανώτατο Ύψος σε μέτρα
	B1	0.90:1	0.50:1	2	-
	B2	0.90:1	0.50:1	2	-
	Δ1	Οπως καθορίζονται στη "Δήλωση Πολιτικής"			
	Δ2	Οπως καθορίζονται στη "Δήλωση Πολιτικής"			
	Γ1	0.20:1	0.15:1	2	8.30
	Γ2	0.15:1	0.10:1	2	8.30
	Γ3	0.10:1	0.10:1	2	8.30
	Z1	0.06:1	0.06:1	2	8.30
	Z2	0.03:1	0.03:1	1	5
	Z3	0.01:1	0.01:1	1	5
	Z4	0.005:1	0.005:1	1	5

- H: Ζώνες με επικρατούσα χρήση την κατοικία.  
 Π: Ζώνη παραθεριστικής κατοικίας.  
 E1: Βιοτεχνική Ζώνη περιορισμένου βαθμού οχληρίας.  
 E2: Βιοτεχνική Ζώνη αυξημένου βαθμού οχληρίας.  
 B1: Βιομηχανική Ζώνη περιορισμένου βαθμού οχληρίας.  
 B2: Βιομηχανική Ζώνη αυξημένου βαθμού οχληρίας.  
 Δ1: Ζώνη στην οποία επιτρέπεται η ανέγερση υποστατικών για μαζική εκτροφή ζώων και πτηνών εξαιρουμένων των χοίρων.  
 Δ2: Ζώνη στην οποία επιτρέπεται η ανέγερση υποστατικών για μαζική εκτροφή ζώων και πτηνών συμπεριλαμβανομένων των χοίρων.  
 Γ: Γεωργικές Ζώνες.  
 Z: Ζώνες Προστασίας (αρχαιολογικοί χώροι, χώροι φυσικής καλλονής, δάση, υδατοφράκτες, καλή γεωργική γη).

Σημείωση: Για τις πιο πάνω ζώνες ισχύουν επιπρόσθετα οι πρόνοιες που καθορίζονται στο κείμενο της "Δήλωσης Πολιτικής".

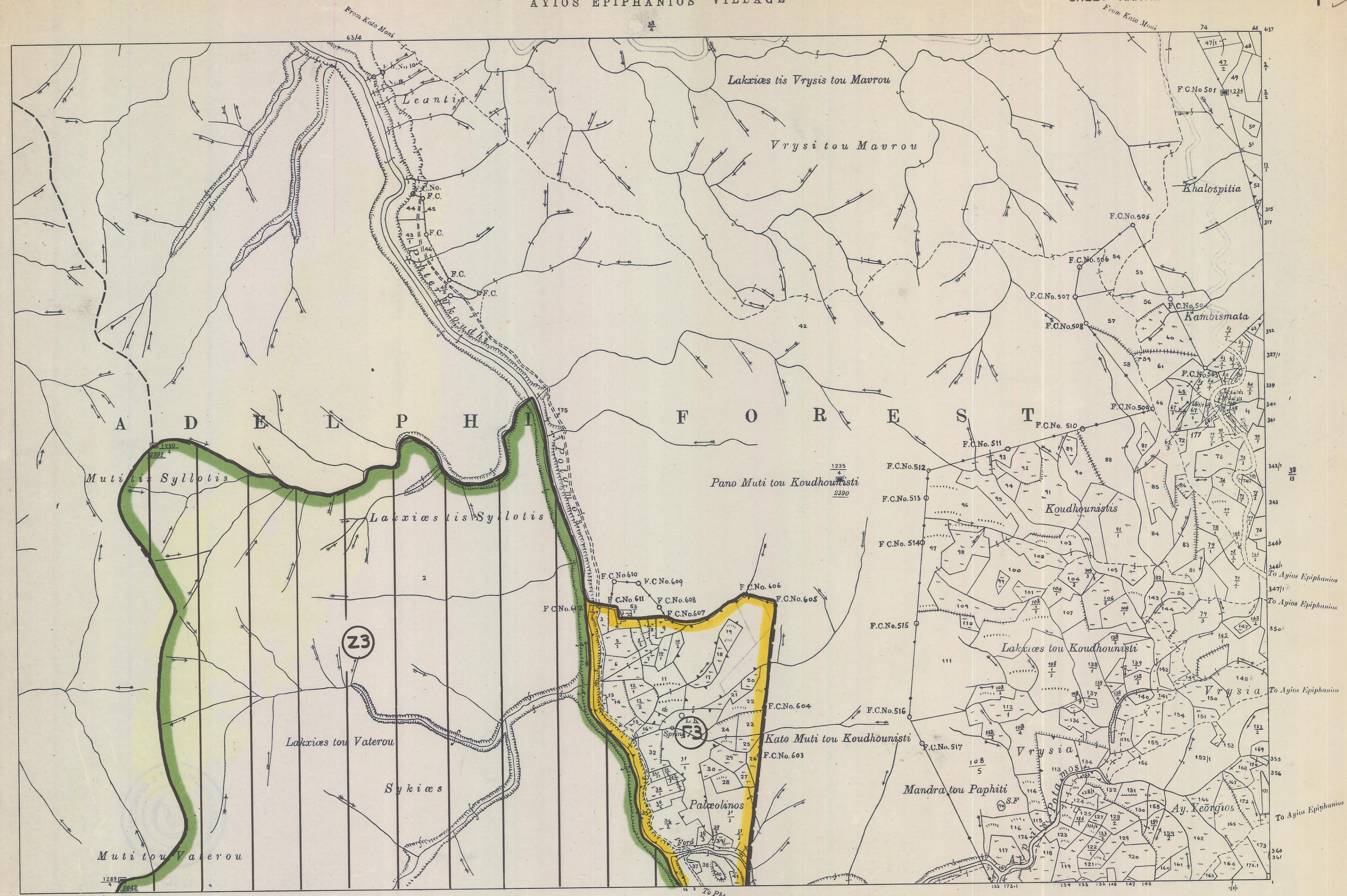




ΤΜΗΜΑ ΠΟΛΕΟΔΟΜΙΑΣ ΚΑΙ ΟΙΚΗΣΕΩΣ	
ΟΤΕΡΙΚΟΥΔΙ	
ΔΗΛΩΣΗ ΠΟΛΙΤΙΚΗΣ	
Πολεοδομικές Ζώνες	
Μελετη: Γ. Παπαγιαννης	Σχεδιο: Κ. Ιωσηφ
Ελεγχος	Εγκριση
Κλιμακα 2=1μικι	Ημερομ Οκτωβρης 1992
Αρ Σχεδιου	ΔΠ/ ΛΕΥ / 166



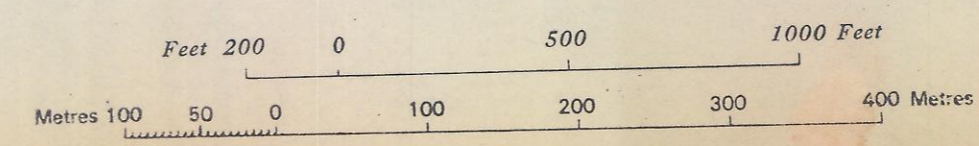
PLATANISSA VILLAGE



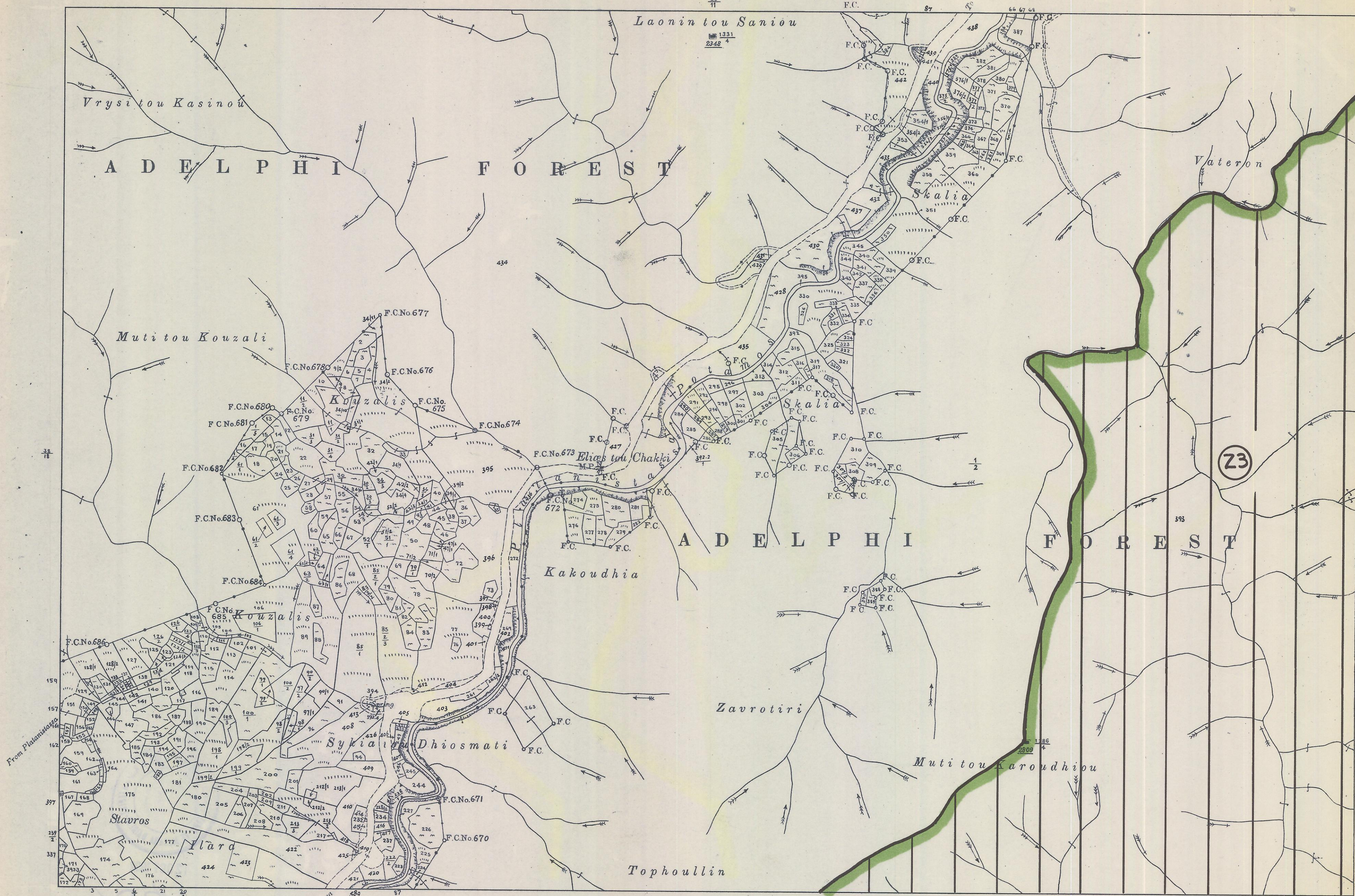
PHTERYKOUDDHI VILLAGE

Surveyed by Dept. of Lands & Surveys, 1925  
 State Copyright Reserved  
 Revised from D.L.O. plans, 1983, 1989

Scale 1 : 5000

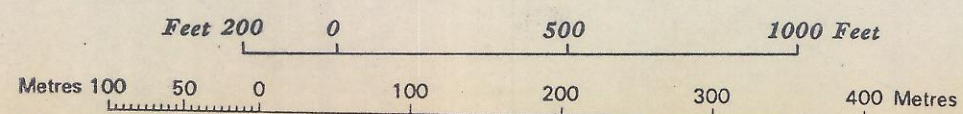






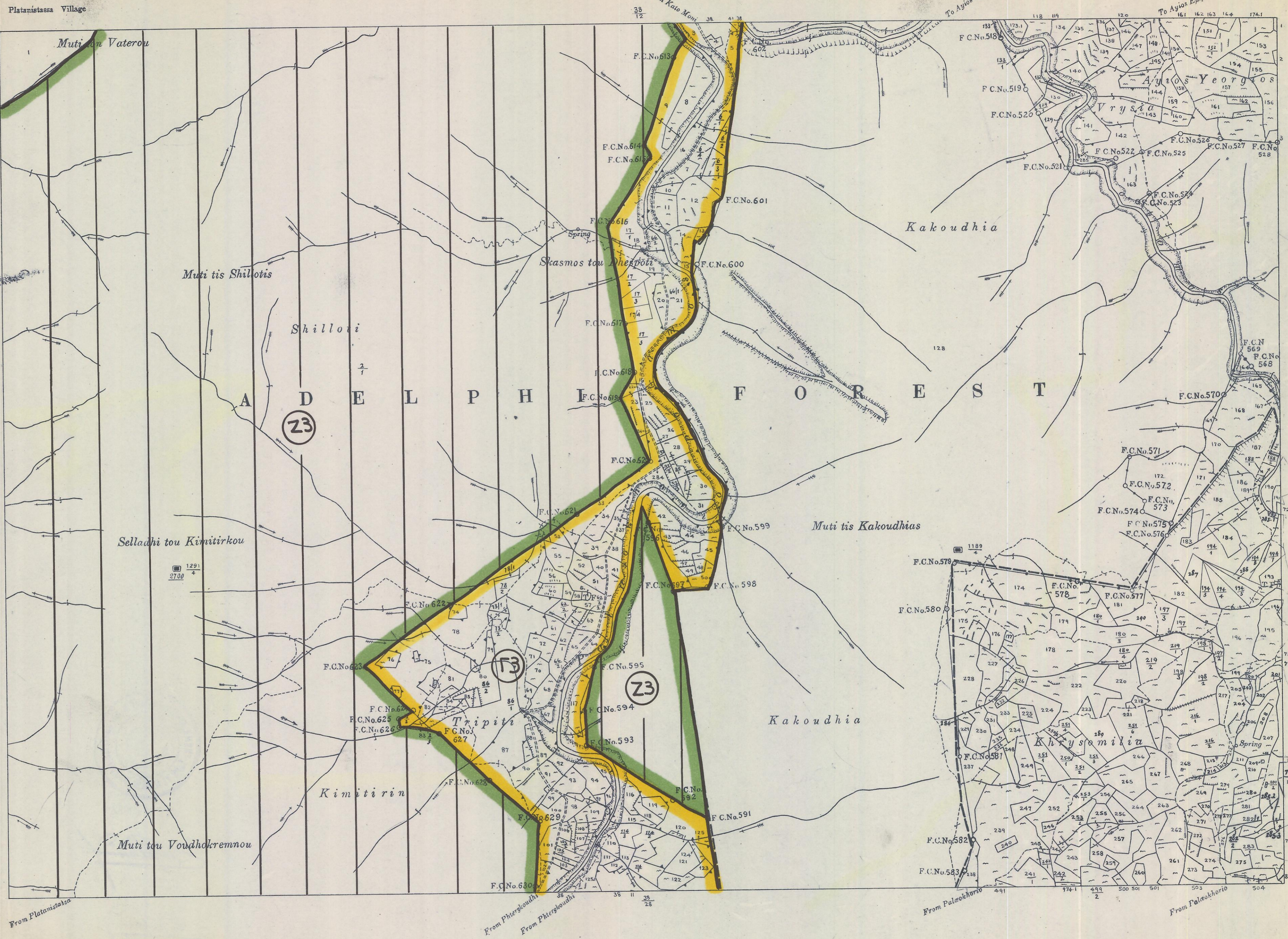
Surveyed by Dept. of Lands & Surveys, 1925  
 State Copyright Reserved  
 Revised from D.L.O. plans, 1983, 1988, 1996

Scale 1 : 5000



PHTERYKOTIHI VILLAGE





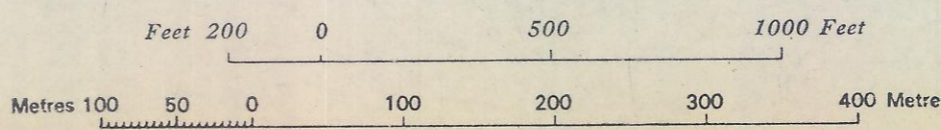
PHTERYKOUDDHI VILLAGE

AYIOS EPIPHANIOS VILLAGE

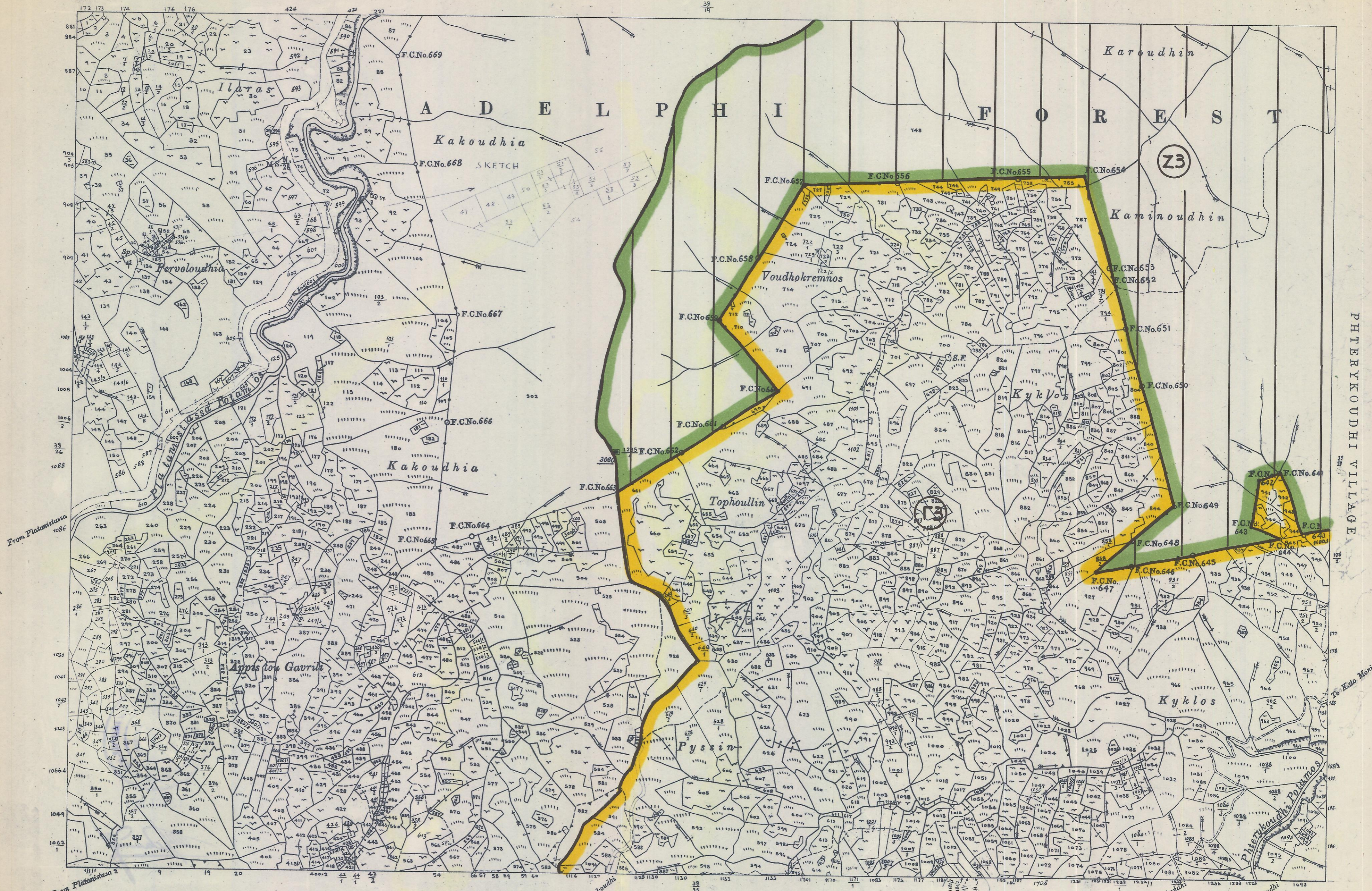
PALAEOKHORIO (MORPHOU) VILLAGE

Surveyed by Dept. of Lands & Surveys, 1924  
State Copyright Reserved  
Revised from D.L.O. plans, 1979, 1989, 1990

Scale 1:5000

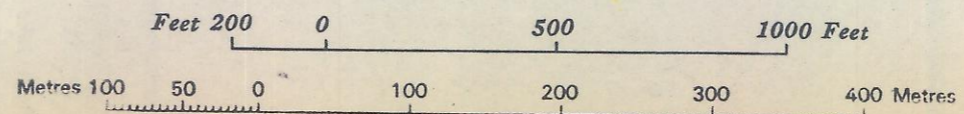






Surveyed by Dept. of Lands & Surveys, 1925  
 State Copyright Reserved  
 Revised from D.L.O. plans, 1983, 1985, 1988, 1989, 1990

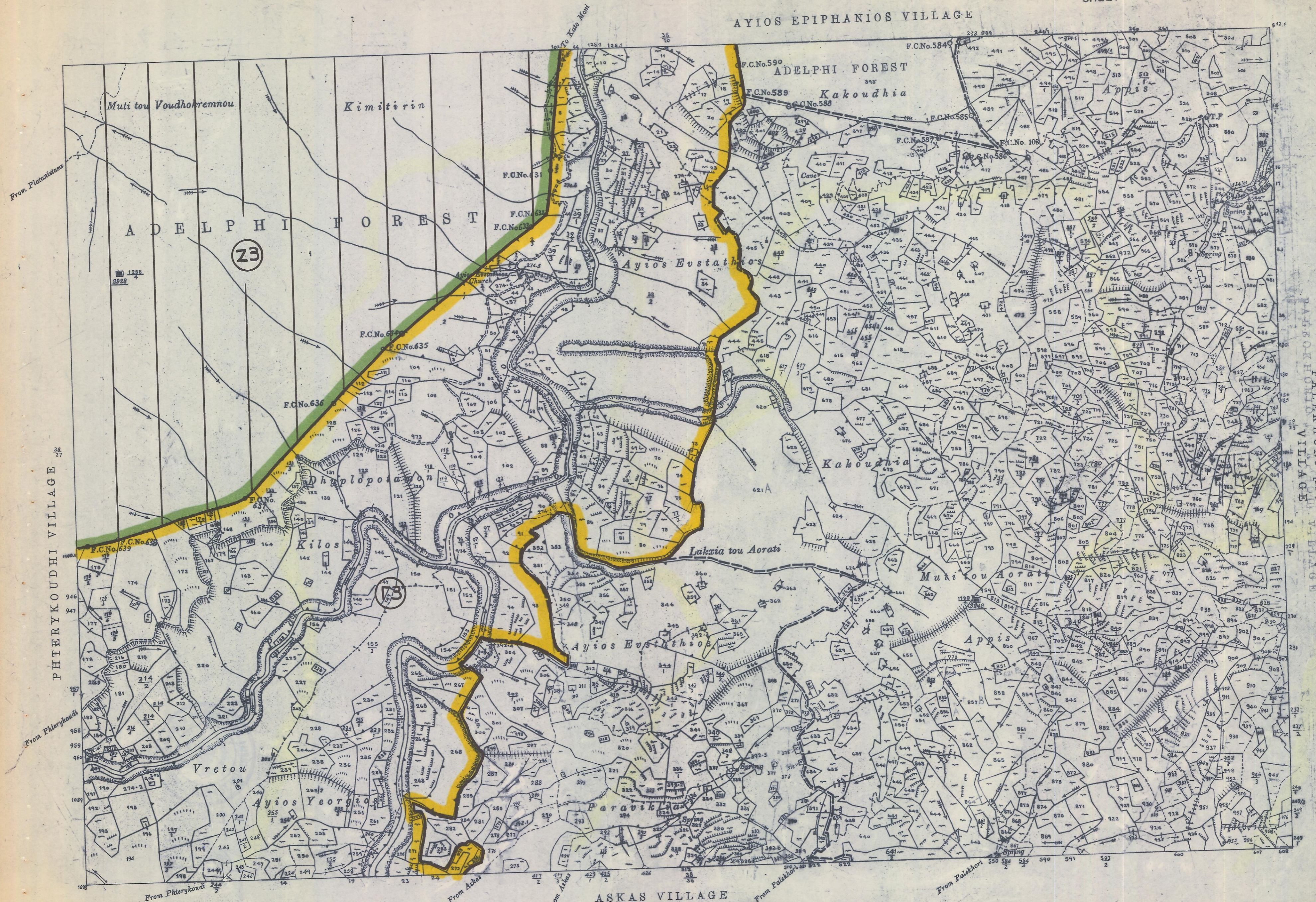
Scale 1:5000



PHTERYKOUDI VILLAGE

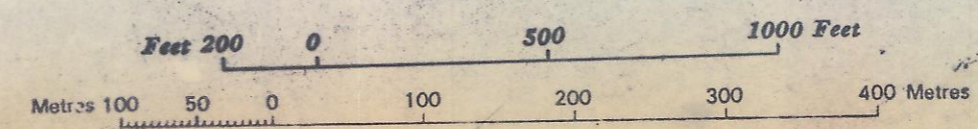


AYIOS EPIPHANIOS VILLAGE

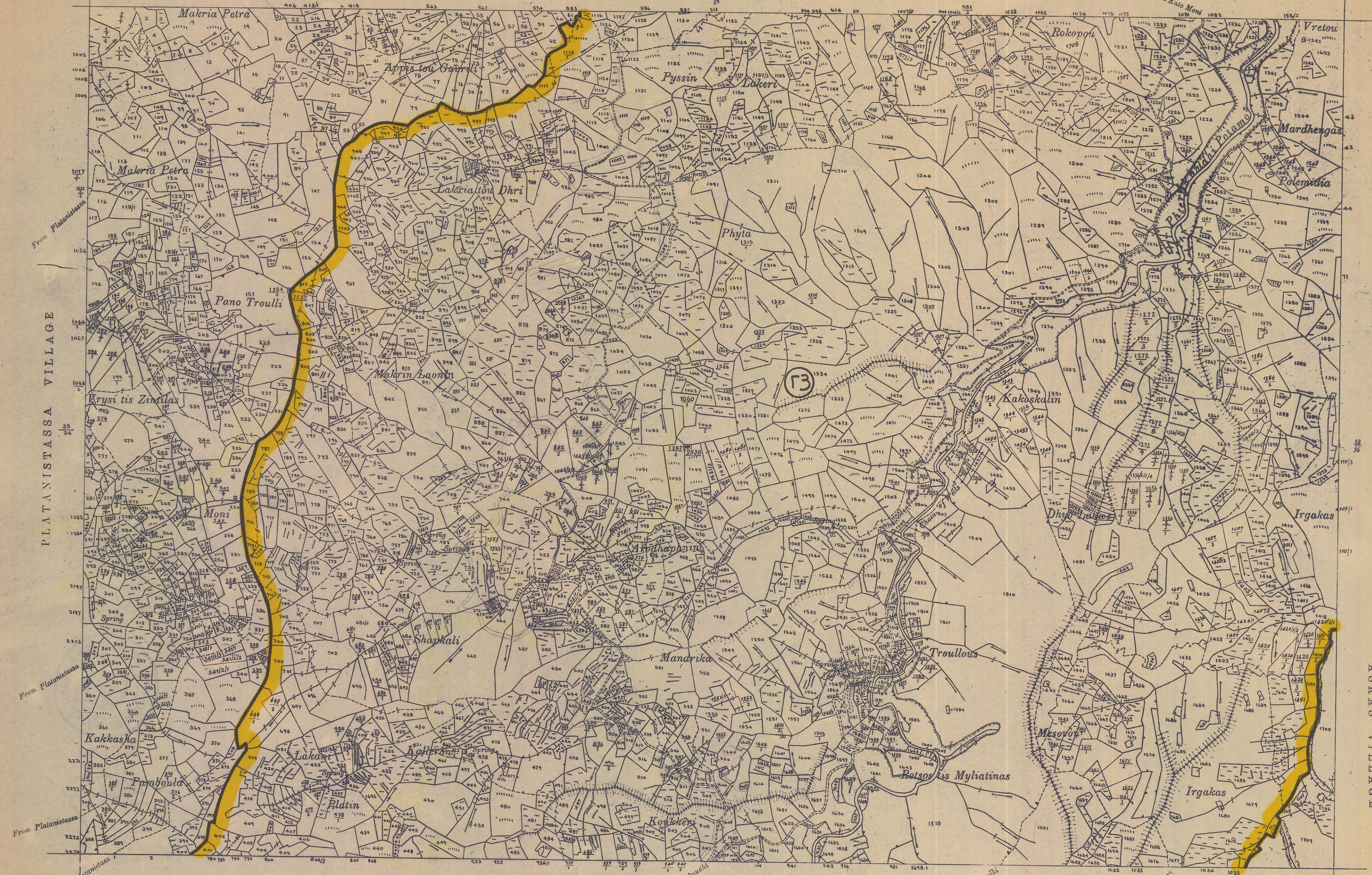


Surveyed by Dept. of Lands & Surveys, 1924  
 State Copyright Reserved  
 Revised from D.L.O. plans, 1983 1989

Scale 1:5000







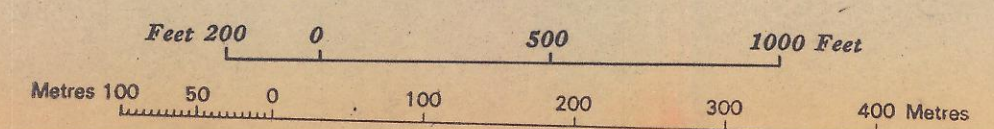
PLATANISTASSA VILLAGE

ASKAS VILLAGE

Surveyed by Dept. of Lands & Surveys, 1924  
 State Copyright Reserved  
 Revised from D.L.O. plans, 1983, 1989

XXXVIII.43

Scale 1 : 5000

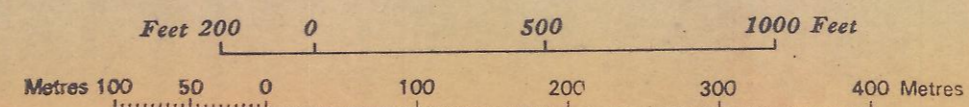






Surveyed by Dept. of Lands & Surveys, 1924  
 State Copyright Reserved  
 Revised from D.L.O. plans, 1983, 1989, 1990

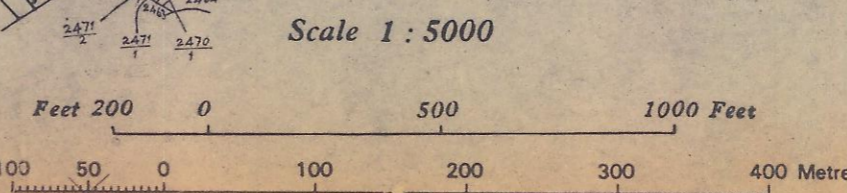
Scale 1:5000







Surveyed by Dept. of Lards & Surveys, 1926  
 State Copyright Reserved  
 Revised from D.L.O. plans: 1984, 1987, 1988, 1989, 1990



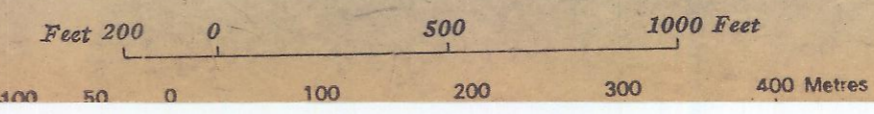


PHTERYKOUDDHI VILLAGE



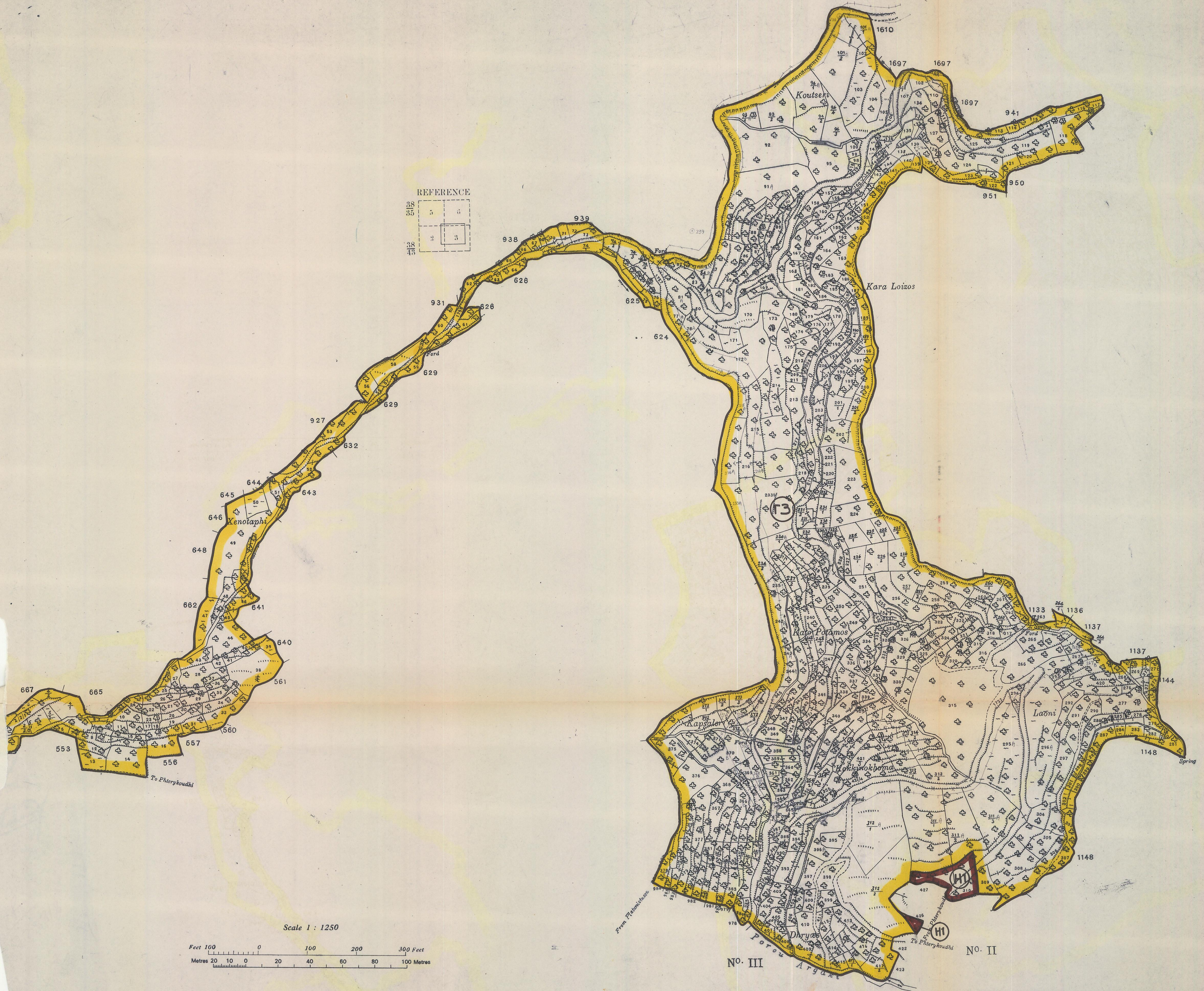
Alona Village  
 Surveyed by Dept. of Lands & Surveys, 1925  
 State Copyright Reserved  
 Revised from D.L.O. plans, 1984, 1987, 1988, 1989

Scale 1 : 5000





# PHTERYKOUDDHI No. I



No. III

No. II



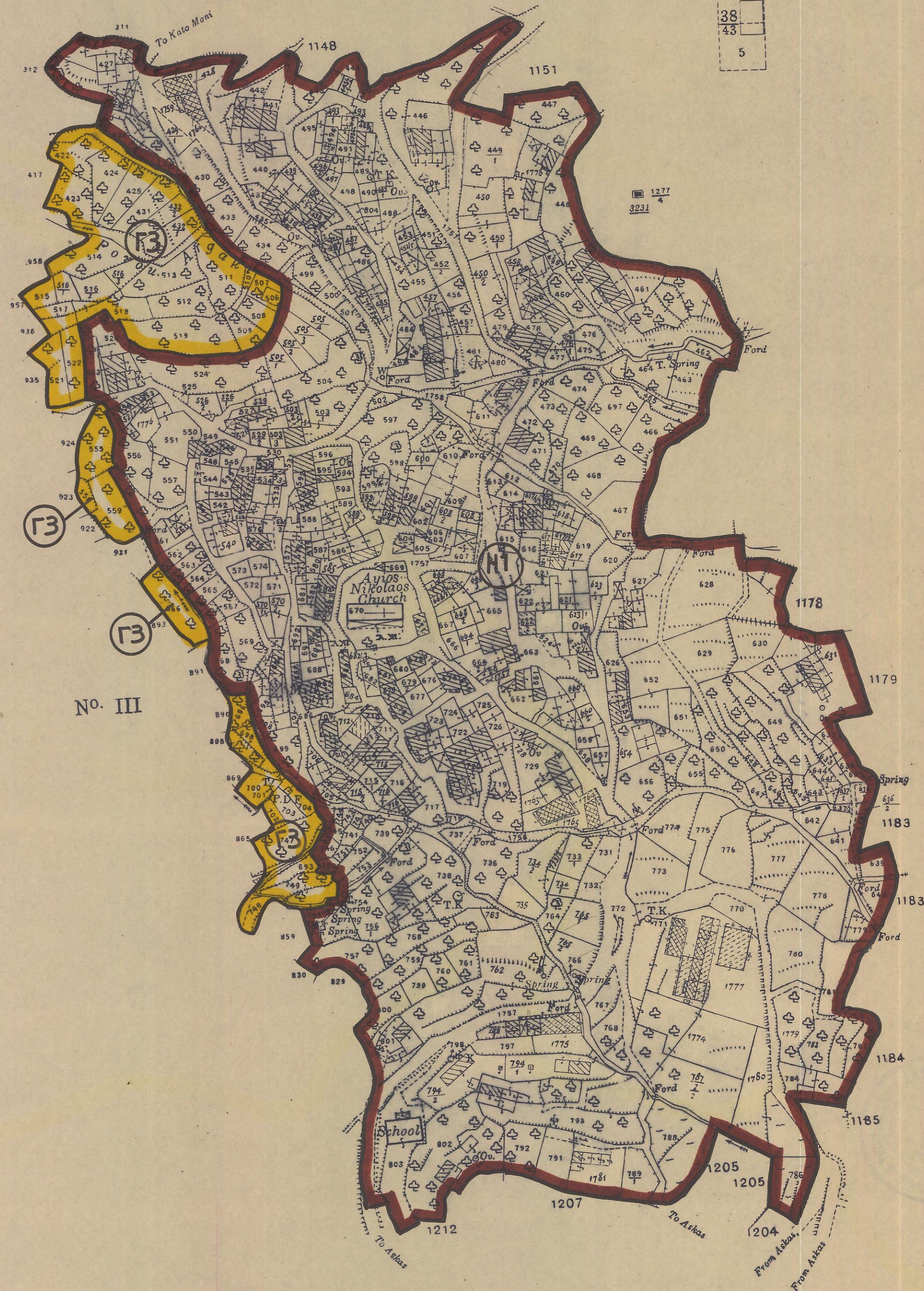
# PHTERYKOUNDHI

## No. II

No. I

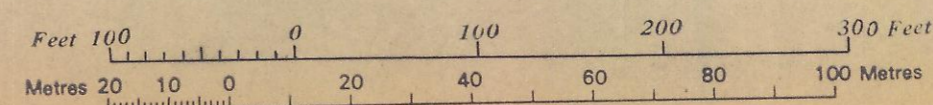
REFERENCE

2
36
43
5



Surveyed by Dept. of Lands & Surveys 1925  
State Copyright Reserved  
Revised from D.L.O. plans 1982, 1988

Scale 1 : 1250





# TERYKOUNDHI

## No. III

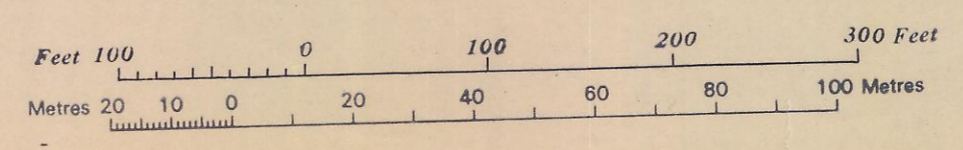
REFERENCE

1	2
	38
	43
4	5



Surveyed by Dept. of Lands & Surveys  
 State Copyright Reserved  
 Revised from D.L.O. plans, February 1982

Scale 1 : 1250





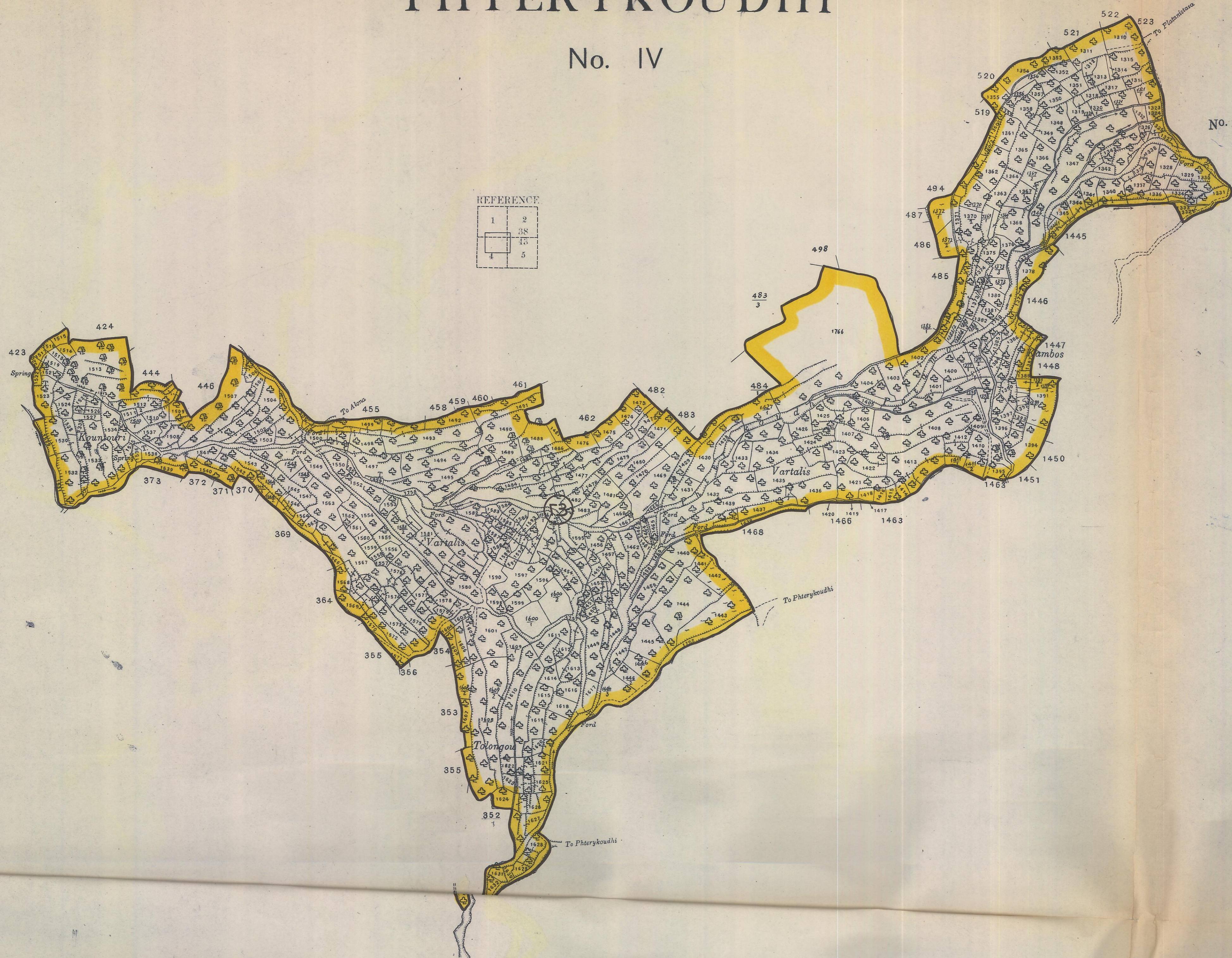
# PHTERYKLOUDHI

No. IV

No. III

REFERENCE

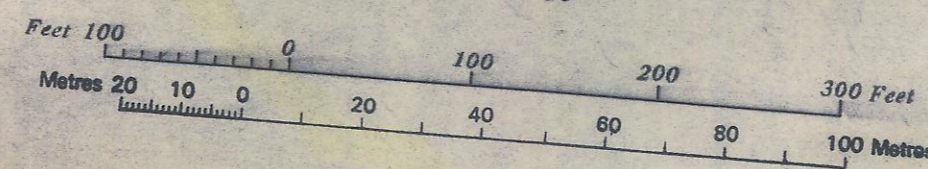
1	2
3	4
5	6



No. V

Surveyed by Dept. of Lands & Surveys, 1925  
State Copyright Reserved  
Revised from D.L.O. plans, February 1982

Scale 1 : 1250



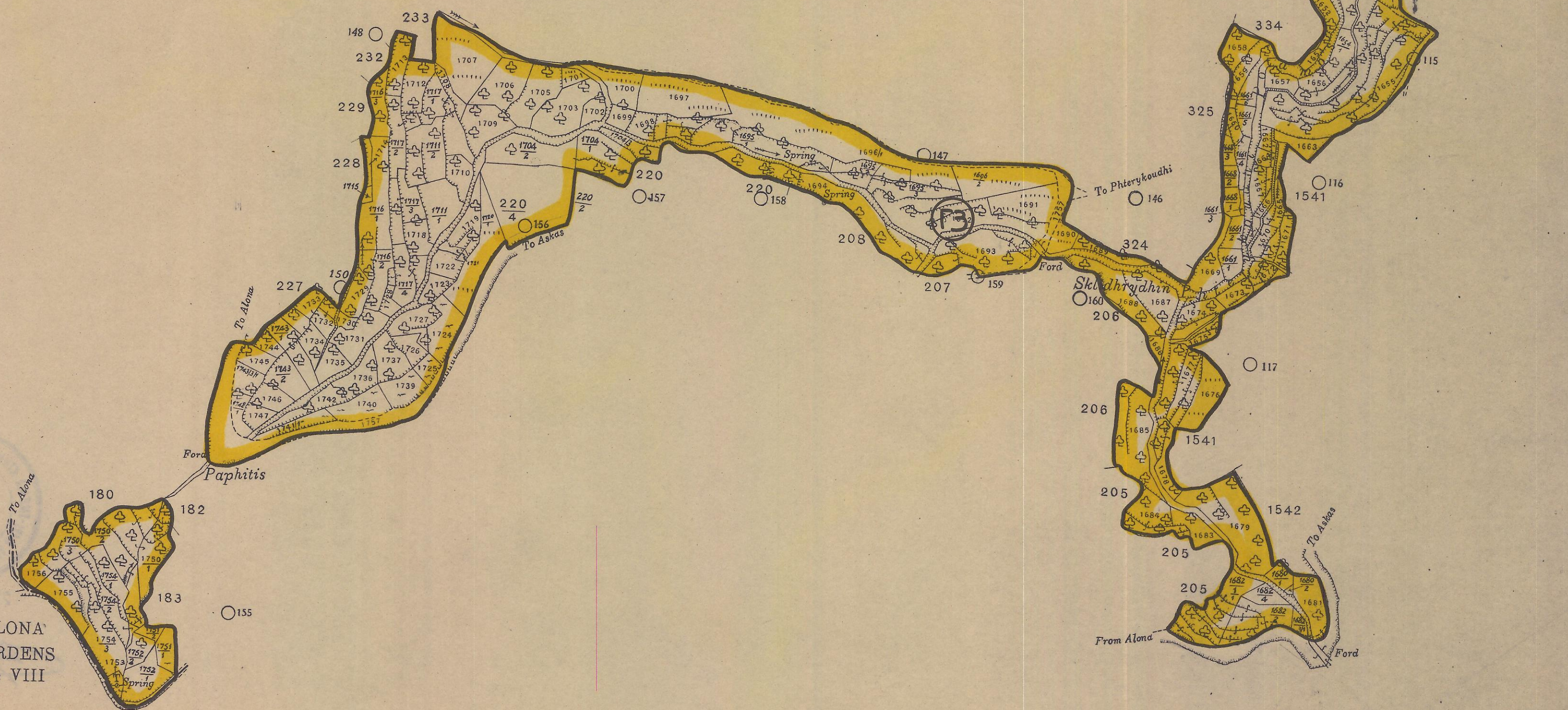
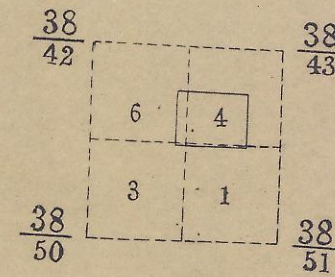


# PHTERYKOUNDHI

No. V

No. IV

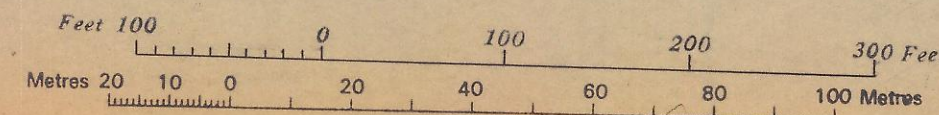
REFERENCE



ALONA  
GARDENS  
No: VIII

Surveyed by Dept of Lands & Surveys 1925  
State Copyright Reserved  
Revised from D.L.O. plans, February 1982

Scale 1 : 1250







Surveyed by Dept. of Lands & Surveys, 1925  
 State Copyright Reserved  
 Revised from D.L.O. plans 1984, 1987, 1989, 1990

PALEKHORI [MORPHOU]  
 VILLAGE

Scale 1:5000

